



**SafeEndo**

enhance your endo !!

# PRODUCT CATALOGUE 2026

**MADE IN INDIA**  
**TRUSTED GLOBALLY**



QUALITY TRUSTED BY  
DENTIST ACROSS  
THE GLOBE



SERVING ACROSS  
EMERGING MARKETS



FOCUSED ON  
BETTER OUTCOMES



## COMPANY PROFILE

SafeEndo Dental India Pvt Ltd has always been at the forefront of pharmaceutical dentistry, developing, manufacturing and distributing a wide range of high quality dental products all over the world. Looking to the future, SafeEndo Dental India Pvt Ltd is also leveraging its competencies to bring innovative solutions in the medical field.

At Safe Endo we manufacture Endodontic, Restorative, Preventive, Auxiliary and Disinfection materials. We also import high quality Endodontic rotary files.

For Manufacturing we use pharmaceutical and food grade materials with high end automated machinery. Special attention is given to quality control at different stages of technological process. Each batch production is checked in our certified laboratory.

SafeEndo Research & Development team is constantly involved in developing new product range for the dental fraternity.

Today we at SafeEndo remain committed in serving Dental fraternity not only in India but all round the World through our trusted channel partners. Our mission is to improve oral health in India and around the World by providing first class quality products.



*In our culture, the white lotus is a symbol of great knowledge, that Goddess Saraswathi is the Hindu Goddess of learning, for all fields of knowledge and all the arts. the word **tamso ma jyotirgamay** means, "O Goddess move us towards light from darkness"*

तमसो मा ज्योतिर्गमय

SafeEndo

## Manufacturing

## Content

### Endodontic Materials

Smart Prep Paste .....	4
BioStructure MTA Putty.....	5
BioStructure MTA .....	6
BioActive 3D .....	7
BioActive RCS .....	8
EpoxySeal .....	9
EugeSeal .....	10
Devitalize, Devitalize Plus, CresoPulp Liquid, SteriPulp Liquid .....	11
CalciCure - IodoCure .....	12
HypoChlor 3.25% - HypoChlor Forte 5.25% - HexaChlor .....	13
SmartPrep Liqued 100ml - DisSolve-E .....	14

### Auxiliary Materials

SmartEtch .....	15
SocketCure - SmartRetract .....	16

### Diagnostic Materials

Explore .....	17
---------------	----

### Filling Materials

SmartTemp .....	18
GlassyRestore .....	19
GlassyLute .....	20

### Disinfection Material

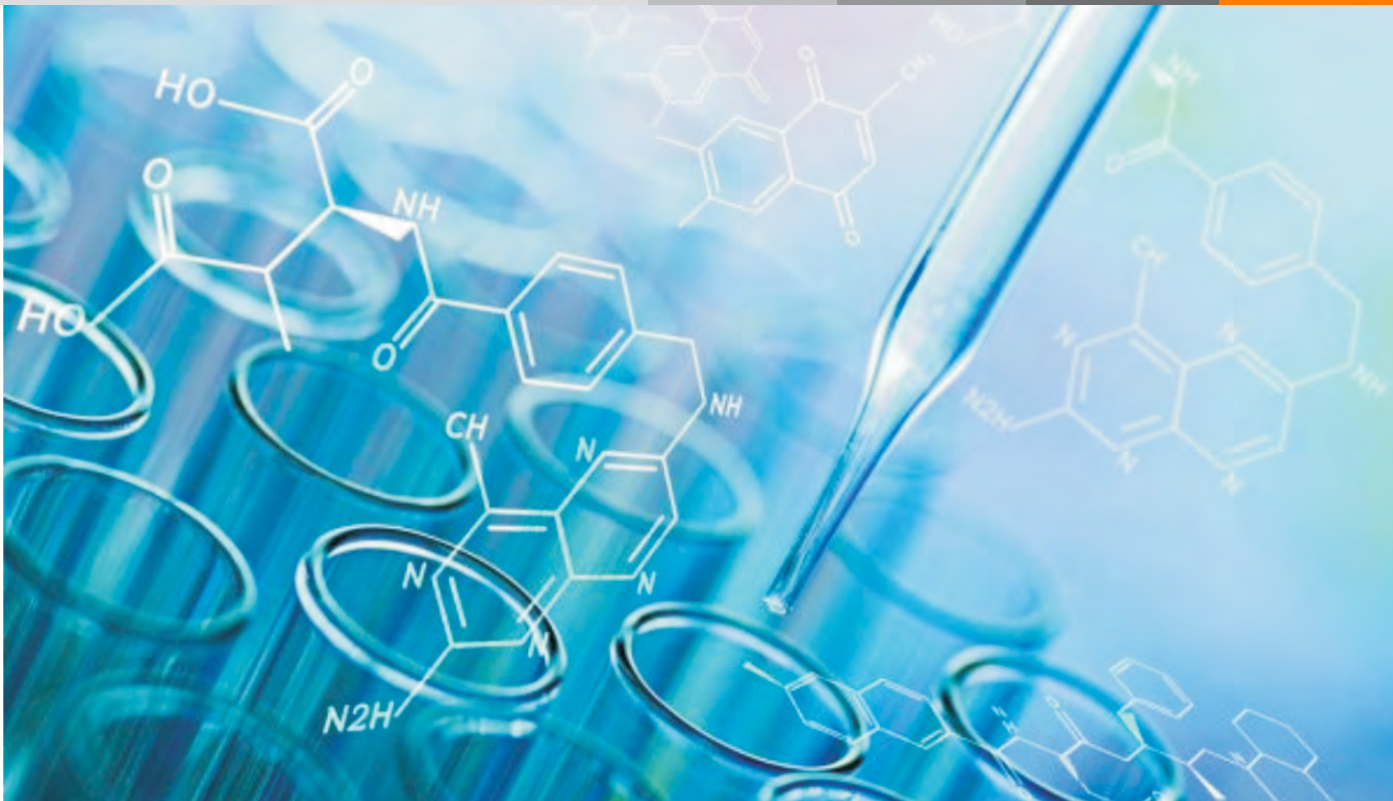
Secure T .....	21
----------------	----

### Light Cure Filling Materials

ReCreate LC .....	22
ReCreate LC-5 Composite Kit - ReCreate LC-7 Composite Kit .....	24
ReCreate LC Flow - ReCreate Bond 5 - ReCreate Bond 7 .....	25
ReCal LC - ReGlass LC .....	26
ReTemp LC Flow .....	27

### Import Products

Smart Files .....	28-31
-------------------	-------



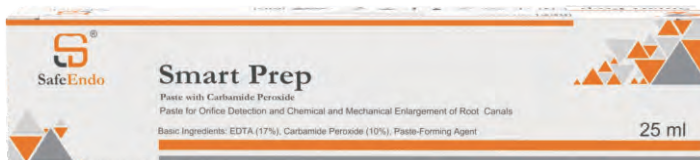
# Endodontic Materials

## Smart Prep Paste

### Edta Paste With Carbamide Peroxide

Paste For Orifice Detection And Chemical Enlargement Of Root Canals

Basic Ingredients Edta Salts (17%), Carbamide Peroxide (10%), Paste - Forming Agent



### Indications for use

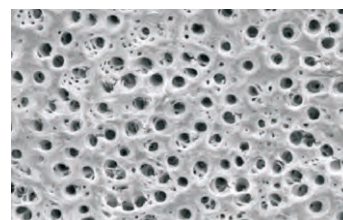
- Detection and Enlargement of Root Canals Orifice
- Lubricating Dental Instruments at Chemical and Mechanical Enlargement of Root Canals

### Packaging :

- Syringe (5 ml), REF 001-02-005
- Syringe (25 ml), REF 001-02-025

### Advantages

- Effective laburicant for endodontic instruments
- Fast penetration of medication into the canals and microtubules
- Easily washed away with water



SEM Images

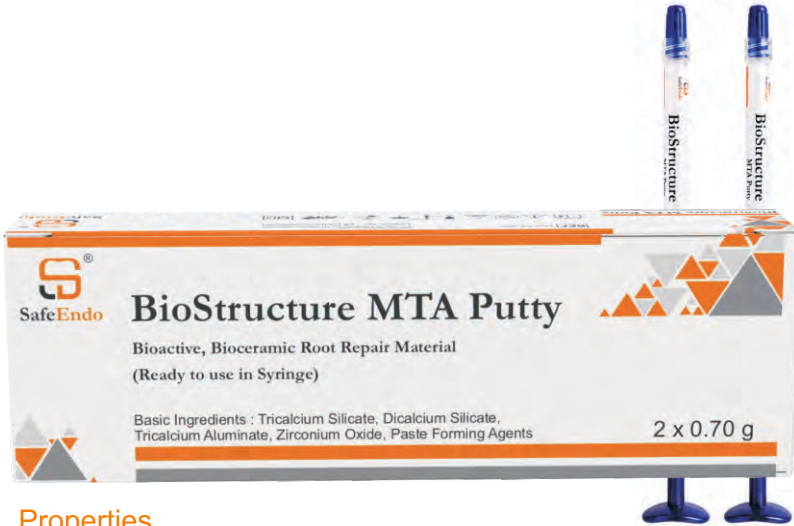
Alternatives : RC Prep, Premier USA

## BioStructure MTA Putty

MTA in Putty form, ready to use in Syringe form

TriCalcium Silicate, DiCalcium Silicate, TriCalcium Aluminate, Zirconium Oxide, Paste Forming agent.

Bioactive paste consisting of an extremely fine, inorganic powder of Tricalcium/ Dicalcium silicate in an organic medium. The product is packaged ready-to-use. No mixing is required.



Packaging:

Syringe (2x0.70 gm),

REF 005-02-070

Syringe (1x0.70 gm),

REF 005-01-070

Indications for use

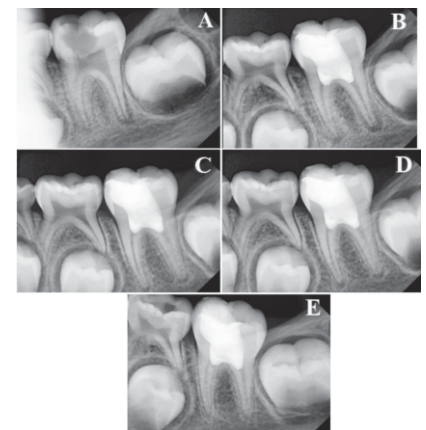
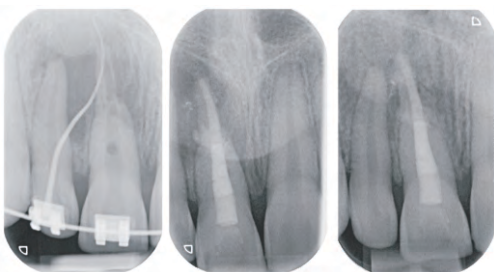
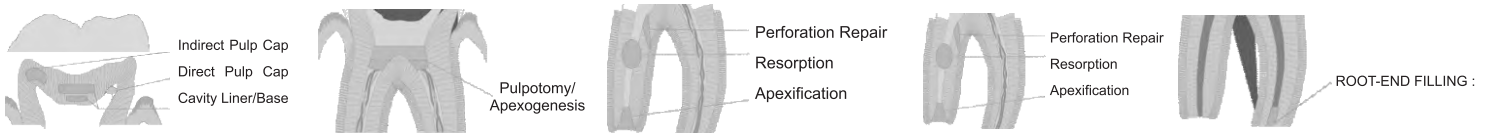
- Indirect Pulp capping
- Direct Pulp capping
- Apexogenesis
- As Cavity liner and base for recurrent carious areas
- Partial Pulpotomy
- Pulpotomy

Properties

- Bioactive Bioceramic
- Does not discolor teeth
- Radiopaque
- Resin-free
- Working Time at room temperature: 10+hrs.
- Initial Setting Time at 37°C, invivo (or moist environment): approx. 4-5hrs.
- Solubility: <4%.
- Dimensional stability: +0.05-0.10%expansion.

Advantages

- Hardens in presence of moisture and blood
- High mechanical resistances
- Excellent biocompatibility
- Low solubility
- High alkalinity and microbicidal activity



Alternatives : Angelus Bio-C Repair

## BioStructure MTA

**Root Repair Material (MTA) Based on Mineral Trioxide Aggregate**

TriCalcium Sillicate, TriCalcium Aluminate, Zirconium oxide  
Liquid : Calcium Chloride in purified water

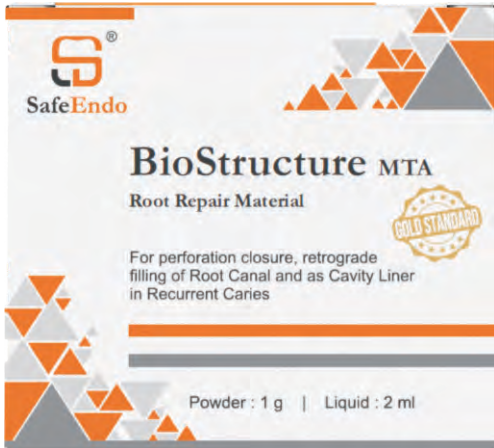
 For kids and adult dentistry use

### Advantages

- Hardens in presence of moisture and blood
- Controlled setting time (16 Minute)
- High mechanical resistances
- Excellent biocompatibility
- Low solubility
- High alkalinity and microbicidal activity

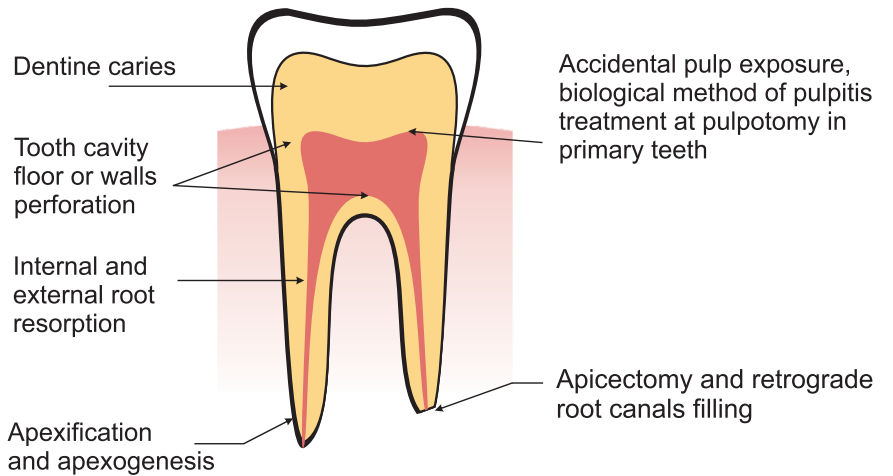
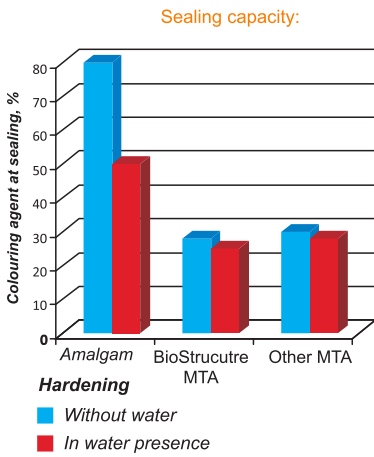


Packaging :  
Powder (1 gm)  
Liquid (2 ml)  
REF 005-01-0102

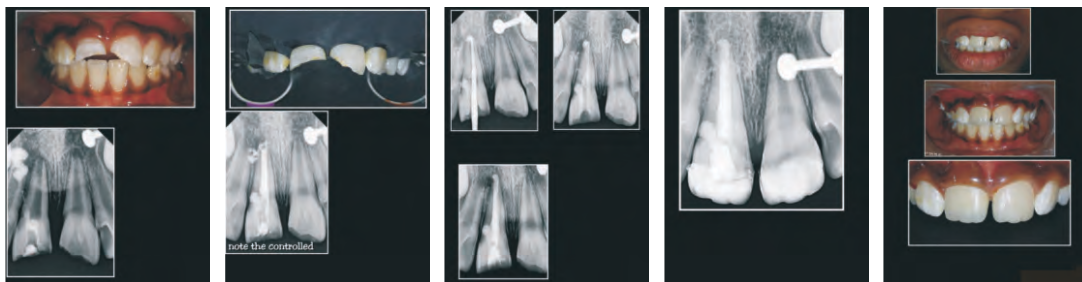


Characteristics	BioStrucutre MTA
Initial setting time	16 minutes
Compression resistance, MPa	45±2
Solubility,%	0,58
pH value	12,8

### Clinical use of BioStructure MTA



### Clinical case of use BioStructure at Apicectomy and retrograde filling



Alternatives : ProRoot, MTA - Dentsply, USA; Biodentine - Septodont, France

## BioActive 3D

### Next Generation Three Dimensional

Bio Ceramic Root Canal Sealer with Strontium Glass

Calcium Silicates (Dicalcium Silicate, Tricalcium Silicate, Tricalcium Aluminate), Calcium Hydroxide, Zirconium Oxide, Strontium Silicate Glass and Dispersing Agent.

 For kids and adult dentistry use

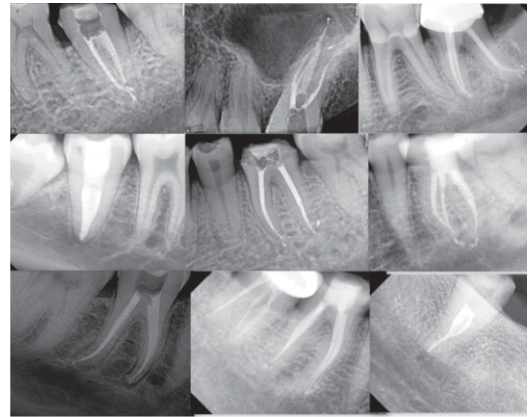
### Next Generation Three Dimensional BioCeramic Sealer with Strontium Silicate Glass



Packaging:  
syringe (3 gm), syringe (2 gm)  
8 dispensing tips  
REF 004-09-003, 004-09-002

#### Indications for use

Permanent root canal filling in combination with gutta-percha points in vital or necrotic pulp cases or after a retreatment procedure. BioActive 3D is suitable for use in single cone technique or cold lateral condensation.




#### Advantages

BioActive 3D is a Next Generation bioactive root canal sealer based on innovative Strontium Silicate Glass chemistry "Active Bio Glass Silicate" that offers

## WHY STRONTIUM GLASS SILICATE ?

### Strontium Glass Silicate (BioActive 3D)


### Calcium Silicate

 ENHANCED BIOACTIVITY & CELL STIMULATION

- Stimulates new bone growth (osteoblasts)
- Inhibits bone resorption (osteoclasts)
- Boosts cell proliferation & differentiation
- Faster apatite formation for quicker integration with bone

Vs


- Bioactive & biocompatible
- Relies on apatite formation
- Creates alkaline environment
- Lacks dual-action cell stimulation and inhibition

 SUPERIOR PHYSICAL PROPERTIES

- Increased hardness & mechanical strength
- Adjustable dissolution rate for controlled ion release
- Improved radiopacity for better X-ray visibility

Vs

- Good biocompatibility
- Lower mechanical strength
- Less radiopaque compared to strontium-based glass

 BETTER FOR SPECIALIZED APPLICATIONS

- Effective in bone tissue engineering
- Promotes dentin repair
- Accelerates setting time

Vs

- Effective in root canal sealing
- Widely used in endodontics (e.g., MTA)
- Lacks specific bone-remodeling therapeutic effects

 THERAPEUTIC BENEFITS

- Promotes osteogenesis
- Inhibits osteoclast activity
- Beneficial for osteoporosis and bone defect treatment

Vs

- Primarily bioactive
- Lacks therapeutic effect on bone remodeling

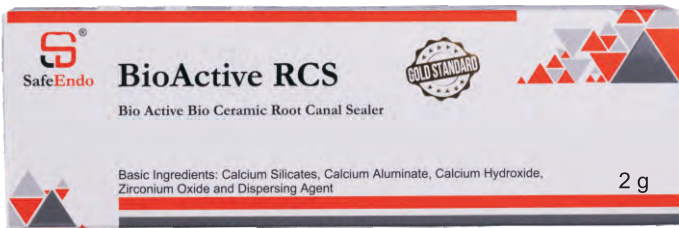
Alternatives : C Root SP China



## BioActive RCS

### Bio Ceramic based Root Canal Sealer

Calcium Silicates, Calcium Aluminate, Calcium Hydroxide, Zirconium Oxide and Dispersing Agent.



Packaging:  
syringe (3 gm), syringe (2 gm), syringe (1 gm),  
8 dispensing tips  
REF 004-01-003, 004-01-002, 004-01-001

### Indications for use

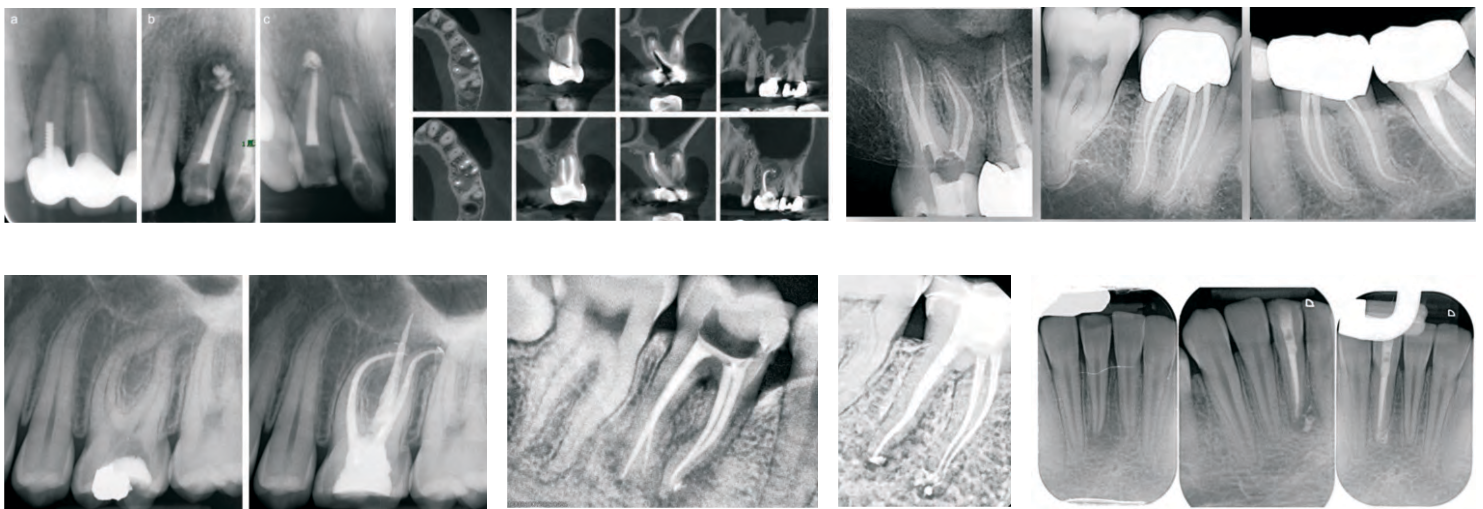
Permanent root canal filling in combination with gutta-percha points in vital or necrotic pulp cases or after a retreatment procedure. BioActive RCS is suitable for use in single cone technique or cold lateral condensation.

### Advantages

BioActive RCS is a bioactive mineral root canal sealer based on innovative mineral micro-aggregate chemistry "Active Biosilicate Technology" that offers

- 1) Biocompatibility: high mineral purity and monomer free formulation reducing the risk of adverse tissue reaction
- 2) Bioactive properties: hydroxyapatite formation at the tooth-sealer interface and mineralization of dentinal structure
- 3) Alkaline pH
- 4) Sealing properties: crystallization of the material inside the dentin tubules creating a tight seal
- 5) Retreatable : if a retreatment is needed, BioActive RCS can be easily removed from the root canal

**Setting Time 6 - 7 Hours Depending upon moisture in canal seal cap tightly after use**



Alternatives : Ceraseal - Meta Biomed, South Korea

## EpoxySeal

Root canals Sealer based on Epoxy-Amine resin with Zirconium Oxide



Packaging :

Ivory paste (tube, 5 ml),  
White paste (tube, 5 ml),  
Mixing pad  
REF 004-02-005

### Indications for use

- Sealing of tooth root canals with gutta-percha points
- Warm carrier-based obturation

### Advantages

- Excellent flow properties
- Longtime lifespan of filling
- Reliable sealing
- Does not contain Urotropin
- Does not cause pain after filling

Film thickness – 5 µm;  
Good flow properties - 25 mm

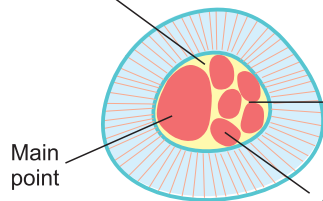
*allow material to penetrate and fill area in-between the points and root canal walls, ensuring proper fitting of points and integrity of root filling*

+

Low solubility - 0,1%

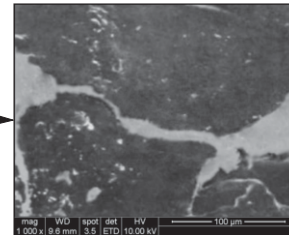
*30 times lower than requirements of ISO 6876 (clause 4.8)*

### EpoxySeal



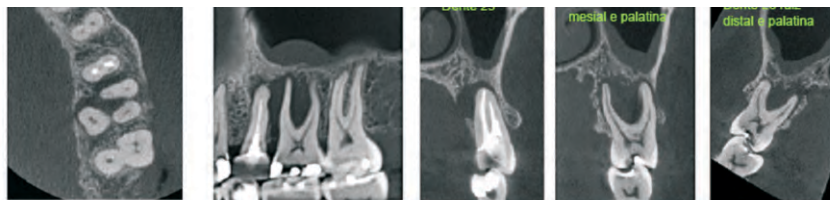
SEM\* image

Use of EpoxySeal sealer with gutta-percha points

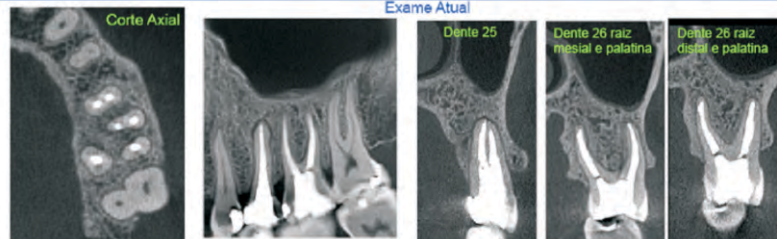


It does not contain urotropin. Hardening does not cause toxic gas emission and exothermic effects in root filling, thus filling amount stays stable and cause no post-filling pains.

- Excellent sealing capacity
- Durable results



Exame Atual



Alternatives : AH Plus - Dentsply, USA

## EugeSeal

### Modified Zinc Oxide Eugenol Root canals Sealer

Zinc Oxide, Calcium Phosphate, Eugenol, Thymol Iodide, Zirconium Oxide

Packaging :  
Powder Glass Bottle (14 g),  
Liquid Bottle with a pipette-cap (10 ml),  
measuring spoon, mixing pad  
REF 004-01-1410

#### Indications for use

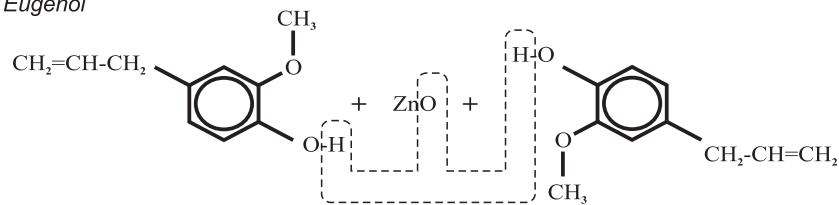
- As Root Canal Sealer for prepared root canals with gutta-percha points



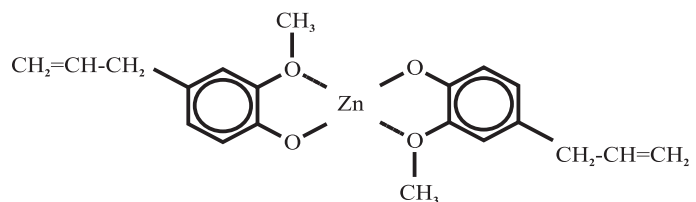
#### Advantages

- Significant periapical sensibility reduction (contains Dexamethasone - 0.01%, Hydrocortisone Acetate - 1.00%)
- Easily mixed and remains flexible during 2-3 hours
- Strong bactericidal effect due to Thymol Iodide
- film thickness 3-5  $\mu\text{m}$
- Low solubility (0.15%) guarantees longtime lifespan of root filling
- Radiopaque

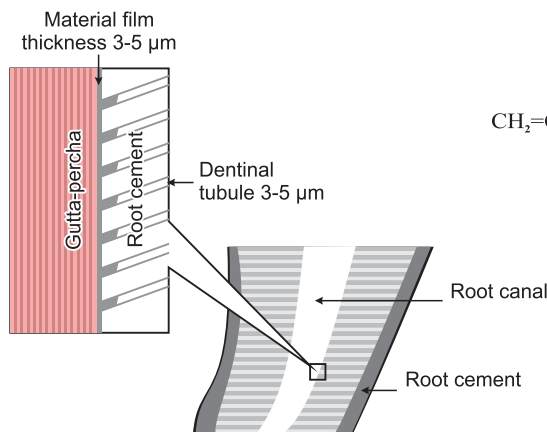
Eugenol



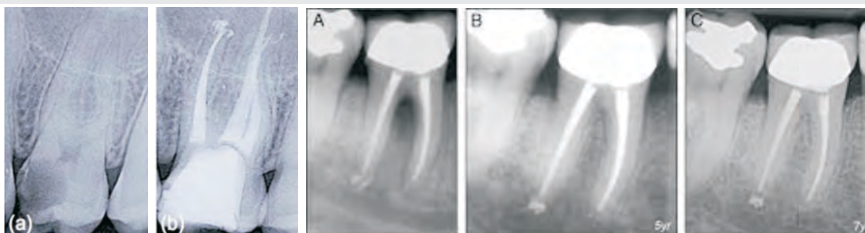
$-\text{H}_2\text{O}$



Zinc eugenolate



#### Clinical case of use EugeSeal at root canal obturation with gutta-percha



Alternatives : Endomethasone - Septodont, France

## Devitalize

### Pulp Devitalizing Fibrous Paste

Non-Arsenic Paste for Dental Pulp Devitalization  
Contains Polyoxymethelene, Lidocaine Hydrochloride, Parachlorophenol, Fibrous filler, paste forming agent



Packaging :  
Paste (8 gm) Jar  
REF 004-01-008

#### Indications for use

- Safe Pulp Devitalization before BioMechanical Preparation of Root Canals

#### Advantages

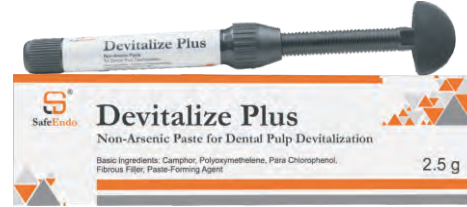
- Safe pulp devitalization
- Prolonged effect
- Painlessness procedure
- Effective pulp necrosis without arsenic

Alternatives: Caustinerf forte - Septodont, France

## Devitalize Plus

### Pulp Devitalizing Fibrous Paste

Non-Arsenic Paste for Dental Pulp Devitalization Contains Racemic Camphor, Polyoxymethelene, Lidocaine Hydrochloride, Parachlorophenol, Fibrous filler, paste forming agent



Packaging :  
Syringe (2.5 gm),  
REF 004-02-050



Racemic Camphor, Gives Synergetic Effect and More Efficient Results

#### Indications for use

- Safe Pulp Devitalization before BioMechanical Preparation of Root Canals

#### Advantages

- Safe pulp devitalization
- Prolonged effect
- Painlessness procedure
- Effective pulp necrosis without arsenic

Alternatives : Depulpin VOCO - Germany

## CresoPulp Liquid

### Analgesic and Antiseptic solution for Root Canal Treatment

Based on Camphor, Chlorophenol and Lidocaine Hydrochloride (5%), Eugenol



Packaging :  
bottle (15 ml),  
with a pipette-cap  
REF 004-03-015

We kindly ask you to read Instruction for use carefully before use

#### Indications for use

- Immediate Pain relief and antiseptic in case of traumatic and acute pulpitis, prior to pulp devitalization
- Pain relief in case of acute pulpitis

#### Advantages

- Immediate and reliable analgesic effect
- Strong antiseptic agent
- Does not cause irritation
- High penetration capability
- Convenient pipette

Alternatives : Pulperyl - Septodont, France

## SteriPulp Liquid

### Antiseptic Disinfectant solution for Root Canal Treatment

Based on Phenol, Formic Aldehyde (non less than 30%)



Packaging :  
bottle (15 ml),  
with a pipette-cap  
REF 004-04-015

We kindly ask you to read Instruction for use carefully before use

#### Indications for use

- As Final Disinfectant for Infected tooth root canals in case of complicated pulpitis
- Treatment with antiseptic agent during Apicoectomy
- Infected root canals treatment

#### Advantages

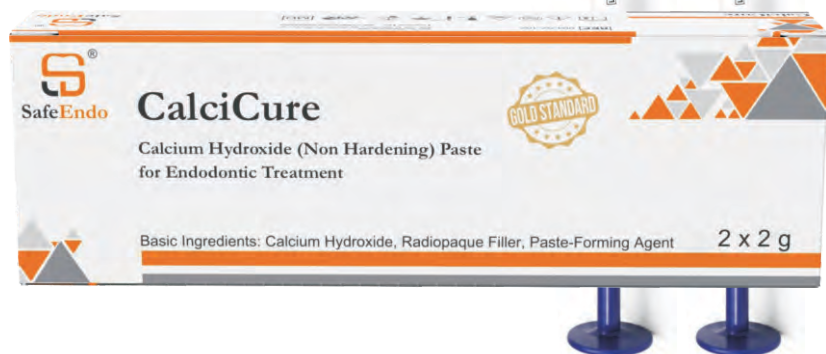
- Strong antiseptic action
- Complete sterilization of tooth root canals
- Effective pain reduction, anti-inflammatory and anti-allergic action
- Convenient pipette

Alternatives : Cresophene - Septodont, France

## CalciCure

### Intra Canal Medicament Paste

Paste based on Calcium Hydroxide for  
Root Canal Dressing



Packaging :  
Syringe (2 x 2 g),  
dispensing tips  
REF 004-02-102



For kids and adult  
dentistry use

### Indications for use

- Intra Canal Medicament Paste for Root Canal treatment
- Apexification and Apexogenesis

### Advantages

- Superior antibacterial effect (pH 12,8) and radioopacity
- Providing conditions for tooth root growth and formation
- Paste is easily removed from canals if necessary
- Ultra-thin dispensing tips (0.52 mm with a hole size 22) allow to apply paste directly into canal

Alternatives : UltraCal XS - Ultradent USA

## IodoCure

Intra Canal Medicament Paste (Treatment for Root Canal Dressing)  
for Apical Retrograde Filling and Root canal filling in Primary teeth  
Based on Iodoform and Calcium Hydroxide



Packaging :  
Syringe (2 x 2 g),  
dispensing tips  
REF 004-02-202



For kids and adult  
dentistry use

### Indications for use

- Chronic and all destructive forms of periodontitis
- Root apexification in case of periodontitis
- Infection of root perforations and fractures
- Primary teeth canals filling

### Advantages

- Strong antiseptic properties (contains iodoform)
- High pH value (12.8), provides fast, continuous and durable bactericidal effect during treatment of infected canals and in periapical area (99% of bacteria are killed within 48 hours after root canal filling with the paste)
- Paste is easily removed from canals if necessary
- Stimulates hard tissues formation in apex
- Ultra-thin dispensing tips (0.52 mm with a hole size 22) allow to apply paste directly into canal

Alternatives : Metapex - Meta Biomed, South Korea

## HypoChlor 3.25 % HypoChlor Forte 5.25 %

**Sodium Hypochlorite solution for Root canals irrigation**  
Sodium Hypochlorite 3.25%, 5.25%,  
Sodium Chloride, Sodium Carbonate, solute qs ad 100g.



**We request you to use rubber dam**

Packaging :

HypoChlor 3.25% 500 ml black bottle with luer cap  
REF 002-01-500

HypoChlor Forte 5.25% 500 ml black bottle with luer cap  
REF 002-02-500

**Indications for use**

- Helps in Irrigation procedure of root canals with acute pulpitis, chronic pulpitis and apical periodontitis
- Helps in antiseptic washing of periodontal pockets

**Advantages**

- Effective cleaning of root canal system.
- Sodium hypochlorite concentrated can dissolve vital pulp remains, Smear layer (organic matrix of the dentin).
- High Bactericidal potency of Sodium Hypochlorite helps in irrigation process of Root Canal Treatment



1 Open cap, Remove Aluminium Seal



2 Puncture Luer cap from needle three side (Do not puncture centre part first)



3 Puncture Luer cap from centre Hole with Needle (Make sure it is straight puncture)



4 Hold the syringe firmly syringe, Luer Cap and start pulling syringe piston

Alternatives : Chloraxid CerKamed

## HexaChlor

**Final Root Canal Irrigation Solution**  
Chlorhexidine Diiguconate Solution (2%)  
in Isopropyl Alcohol



Packaging :

HypoChlor 500 ml bottle  
with luer cap

REF 002-04-500

**Indications for use**

- Treatment of infected Root Canals with Pulpitis and Periodontitis as final irrigation.
- Treatment of prepared tooth cavity before filling
- Prophylactic washing of Oral Mucosa in Gingivitis and initial Periodontitis
- Antiseptic washing of Periodontal Pockets

**Advantages**

- Powerful Antiseptic, inhibiting anaerobic flora of root canals. Antiseptic is active against gram-positive and gram-negative bacteria and retains its properties in blood and pus.
- Effectively sterilizes root canal system.
- Does not reduce the adhesion of sealing material to tooth tissues.

↑ Easy to operate with luer cap

Alternatives : Gluco Chex 2% CerKamed

## SmartPrep Liquid 100ml

### Root Canal Chelating Material

EDTA solution for Root canals irrigation  
17% Disodium EDTA, 0.7% Cetrimide



Packaging :  
SmartPrep Liquid 100 ml  
bottle with luer cap  
REF 002-03-100

### Indications for use

- Irrigation and Chelating agent in Root Canal Treatment
- Detection of root canal orifice
- Chemical enlargement of root canals during preparing for BMP

### Advantages

Main component is EDTA, after injection into dentine forms a complex with dentine calcium, loosens the structure of hard tooth tissues and makes easier enlargement of calcified and sclerous orifice of the canals, cleans and forms hard accessible tooth canals.

↑ *Easy to operate  
with luer cap*

Alternatives : Endo - Solution 17% CerKamed

## DisSolve-E

### D-Limonene based Gutta Percha and Zinc Oxide Eugenol Cement Solvent



Packaging :  
DisSolve-E 15 ml  
bottle with Euro Dropper  
REF 002-06-015

### Indications for use

DisSolve E.G.P. Solvent is used for removing gutta percha at the time of root canal retreatment. Also useful for removing all types of root canal filling materials including Zinc Oxide - Eugenol Cement or as a cleaner for endodontic instruments.

### Advantages

DisSolve E, Gutta Percha Solvent is used for removing gutta percha at the time of root canal re-treatment. DisSolve E, Gutta Percha Solvent is based on natural substances and therefore it does not cause irritation to oral mucosa and peri-apical tissue.

Alternatives : EndoSolv Septodont France



# Auxiliary Materials

## SmartEtch

**Etching Gel for Dentin and Enamel**  
 Orthophosphoric acid (37%)  
 Gel forming agent with aqueous base

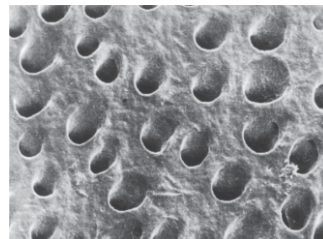
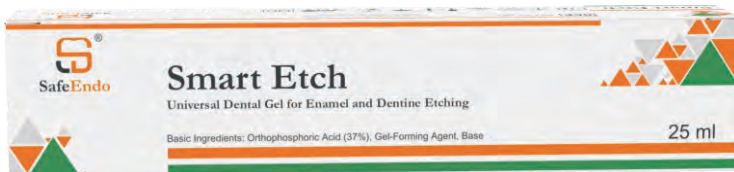
Packaging :  
 Syringe (5 ml), REF 001-01-005  
 Syringe (25 ml), REF 001-01-025  
 dispensing tips

### Indications for use

- Enamel and Dentine etching according to acid etching technique

### Advantages

- High colour contrast for application control
- Efficient consistency for point application
- Easy to wash away with a stream of water and air
- Does not discolour tooth surface



SEM IMAGE

Thixotropic gel for controlled application

Alternatives : Ultra Etch - Ultradent, USA

## SocketCure

### Dry Socket Paste for Extracted Wound

Butamben 26%, Iodoform 16%, Eugenol 14%, excipients



Packaging :  
Jar (15 g)  
REF 004-05-015

SocketCure contains active components, providing long-term therapeutic effect:

- Iodoform is an antiseptic, possessing prolonged antibacterial effect
- Eugenol enhances antiseptic effect
- Butamben reduces pain by its analgesic effect on tissues for several hours
- Calcium containing filling component promoting formation of primary osteoid in the socket

### Indications for use

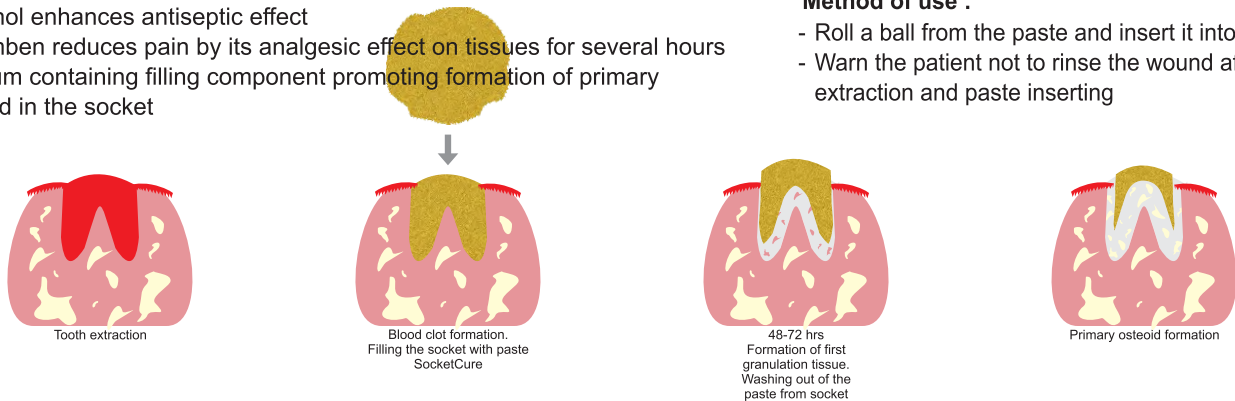
- Non Resorbable Temporary Filling
- Socket filling after tooth extraction
- Acute alveolitis treatment

### Advantages

- Fast and prolonged analgesic effect
- Strong antiseptic
- Fast hemostasis and blood clots formation
- Good consistency - fibrous easy forming paste
- Fast wound healing
- No need to remove the paste from socket (gradually washing)
- Does not hurt oral mucosa

### Method of use :

- Roll a ball from the paste and insert it into tooth socket
- Warn the patient not to rinse the wound after tooth extraction and paste inserting



Alternatives : Alvogyl - Septodont, France

## SmartRetract

### For Gingival Retraction and Hemostasis

Based on Aluminium Chloride (25%)  
Benzalkonium Chloride, Gel forming agent



Packaging :  
Syringe (5 ml), REF 001-03-005  
dispensing tips  
Liquid (15 ml), REF 002-03-015  
euro dropper bottle

### Indications for use

- Prevent Gingival capillary bleeding
- Stop Gingival leakage
- Gingival retraction for impression making and cervical caries treatment

### Advantages

- High-efficient hemostatic and astringent agent
- Immediate retraction with a prolonged effect (20-30 min.)
- Easily washed away with jet of water
- No discoloration for contacting tissues and materials
- Easy to use with the help of syringe with dispensing tips

Alternatives : ViscoStar Clear - Ultadent, USA



# Diagnostic Material

## Explore

### Caries Detector Dye

Acid Rhodamine Dye in semi-aqueous base

Packaging :  
Bottle Euro Dropper (15 ml)  
REF 002-07-015



### Indications for use

- Caries Disclosing Agent for Conservative Dentistry

### Advantages

Caries Detector Dye  
Fast and Easy Use, reserves Healthy Tooth Hard Substance, Stains Tooth Hard Structure RED changed by Dental Caries during all Preparatory measure in the cavity.

Small amount of liquid is applied or painted on infected tooth surface or dentin surface by micro applicator tips for 10 seconds. Wash the liquid off with water and dry with compressed air. At the same time, it makes sure that as little healthy dentin which can be remineralised is removed as possible, secures pulp vitality, and preserves the healthy tooth structure. Using Explore, you can confidently proceed with the excavation because only the irreversibly diseased dentin is stained red.

Alternatives : Caries Detector-kuraray Japan



# Filling materials

## SmartTemp

### Eugenol Free Temporary Filling Material

Zinc Oxide, Calcium Sulphate, Poly Vinyl Acetate Resin, Flavours and additives.



For kids and adult dentistry use

Packaging :  
Jar (40 g)  
REF 005-02-040

### Indications for use

- As a Temporary Filling material for Root Canal Procedure
- Cavity Restoration and Inlays and implant abutment sealer.

### Advantages

- High-ductile material
- Does not contain eugenol
- Quick hardening (4 minutes)
- Safe tooth cavity sealing
- Applicable for paedodontics



**! Tightly Close  
Cap After Use**

**Dibutyl  
Phthalate Free**

Alternatives : Cimpat - Septodont, France

## GlassyRestore

### Radiopaque Glass Ionomer Cement for Restoration

Powder : Fluoroaluminosilicate Glass Powder, Modifier, Dye stuff  
 Liquid : Polyacrylic acid, Maleic Acid, Tartaric acid

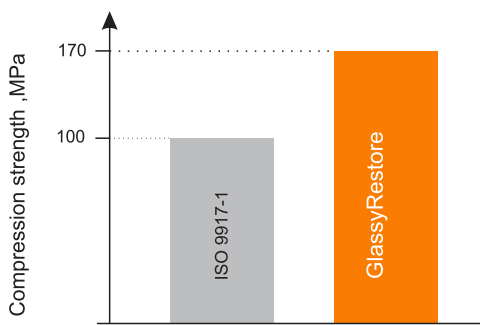


For kids and adult dentistry use



#### Indications for use

- Filling cavities of I, II, III and V class (according to Black classification)
- ART-technique filling
- Primary teeth filling
- Sealing of fissure small defects, caused by non-carious lesion of teeth
- In aim to form layer-base for composite restoration
- Temporary filling



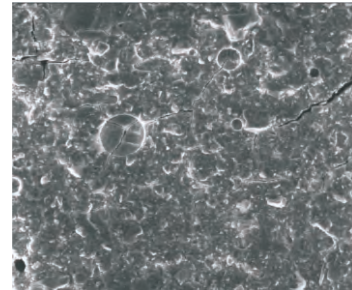
Powder (bottle) 20g  
 Liquid (bottle) 15g (13 ml),  
 Measuring spoon (1 pcs)  
 Mixing pad (1 pcs)  
 REF 005-02-2015

#### Advantages

- Good adhesion
- Efficient hardening time
- Compression strength 170±5 Mpa
- Prolonged anti-carries effect, fluoride release
- Radio-opacity
- Biocompatibility
- Proper aesthetic characteristics
- VITA shades guide: A2, A3,

## Aesthetic properties of GlassyCem restorative GIC

### Transparence in comparison



SEM Image

Ratio powder/liquid, g/g	1/0.75 1 dose meter of powder spoonful / 1 drop of liquid
Mixing time, sec	30-45
Working time, min.	2,0-2,5
Hardening time from the start of mixing, min.	4-5



Alternatives: Fuji IX - GC, Japan

## GlassyLute

### Radiopaque Glass Ionomer Cement for Luting

Powder : Fluoroaluminosilicate Glass Powder, Modifierator

Liquid : Polyacrylic acid, Maleic Acid, Tartaric acid



For kids and adult dentistry use

Powder (bottle) 35g  
Liquid (bottle) 25g  
Measuring spoon  
Mixing pad (1 pcs)  
REF 005-01-3520

#### Indications for use

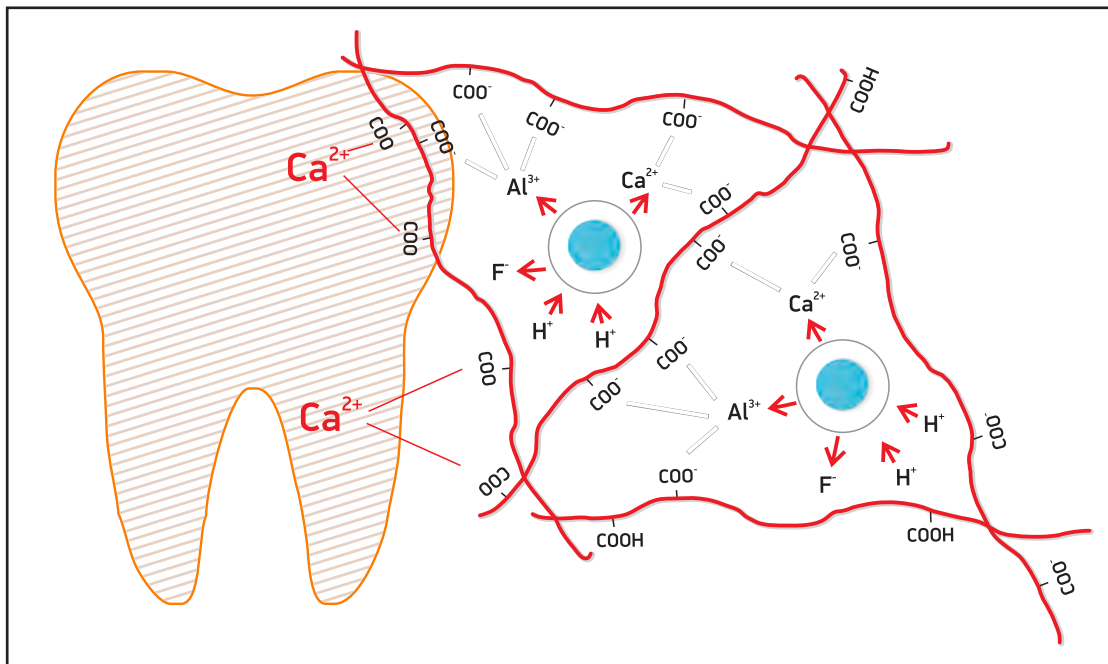
- Fixing of crowns, dental bridgework, inlays and onlays
- Formation of tooth stump

#### Advantages

- Prolonged anti-carries effect
- Radio-opacity
- Biocompatibility
- Suitable for fixation of metal-free crowns and bridges made of high-strength types of ceramics
- Film thickness 10 Micron
- Good adhesion



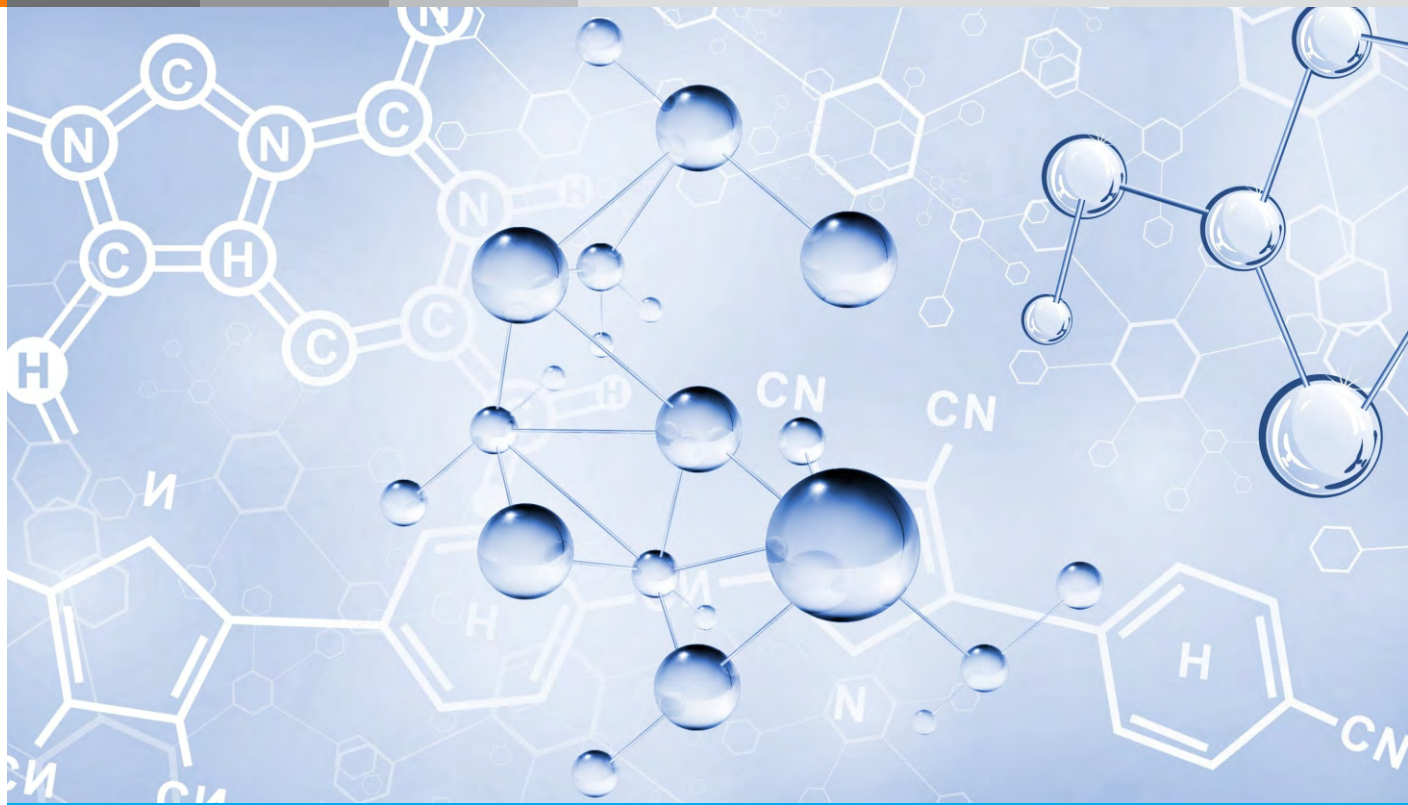
### Adhesion force = Ionic force



Scheme of interaction of polyacrylic acid and dentine calcium ions

- Adhesion to dentine using conditioner 6,5 – 7,5 MPa
- Adhesion to dentine without using conditioner 4,5-5,2 MPa

Alternatives: GC - Fuji I, Japan



# DisInfection Material

## Secure T


### Total Surface Disinfectant

Isopropyl Alcohol 25%, Benzethonium Chloride 0.28%, Sterile Distilled Water, Flavours and Stabilizers


Packaging :  
500 ml bottle with  
Trigger Spary  
REF 007-01-500

**EFFECTIVE SURFACE DISINFECTANT AGAINST** Mycobacterium Tuberculosis, Staphylococcus Aureus, Streptococcus Aureus, Hepatitis B virus, Hepatitis C virus, Herpes Simplex type 1 and 2, HIV-1, Covid-19.


#### - SURFACE DISINFECTANT, CLEANING

Secure T will effective clean and disinfect, when sprayed directly on surface after inserting trigger sprayer, wipe it  after 3 minutes with sterile cloth or tissue paper. Liquid will not evaporate.

#### - PRECLEANING INSTRUMENTS

Secure T will be effective to allow complete submersion, cover and allow to soak for 10 minutes in sterile container, after rinse it properly (Non Corosive property). Add one ounce of Secure T per liter of water to  ultrasonic cleaner, activate solution for 10 minuets, rinse and wash thoroughly under running water and then go with autoclave procedure.

#### - WIPING INSTRUMENTS

For Endoscopic instruments, Dental Ultrasonic scaler, Dental  Light Cure Unit, Operatory light and other radiographic sensors, spray and leave solution for 3 Minutes and wipe sterile cloth or tissue paper.



#### Dual Purpose... Disinfectant And Cleaner ...2 In 1 Solution

- Better And Wide Coverage Area Compare to Spray
- Gentle and Non Corrosive On Instruments
- Due To Its Leave-on Type Nature,
- Offers Prolonged And Wide Spectrum Efficacy



# Light Cure Filling materials

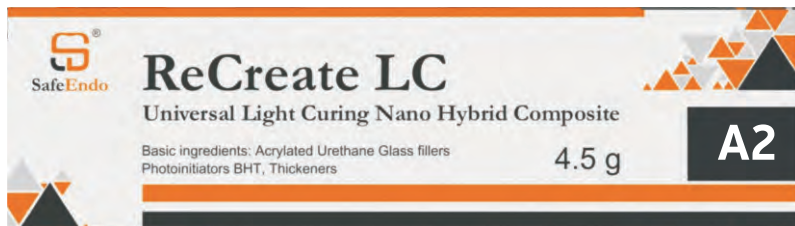
## ReCreate LC

Universal Nano-Hybrid light-curing packable Composite material

Packaging :  
Paste - Syringe (4.5 g)  
REF 005-02-450



For kids and adult  
dentistry use



### Indications for use

- Restoration of all cavity classes according to Black classification
- Core Build-ups
- Splinting
- Correction of composite restorations
- Fabrication of indirect restorations (inlays, onlays, veneers)

### Advantages

- Excellent polishing
- Does not stick to instrument
- Keep stable at modeling
- Excellent radiopacity
- Fluorescence

### Physical properties\*:

Compressive strength, MPa	390
Flexural strength, MPa	130
Flexural modulus, GPa	9.5
Diametral tensile strength, MPa	65
Water absorption, µg/ mm <sup>3</sup>	3.5
Solubility, µg/ mm <sup>3</sup>	0.17
Volumetric shrinkage, %	1.8
Radio-opacity, mm Al	3.5

Shade : A1, A2, A3, A3.5, B1, B2, B3, OA2, OA3, INC

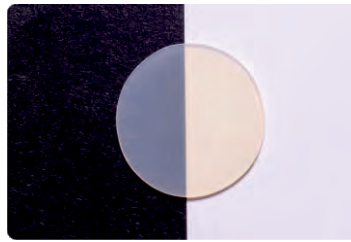
### Special set of fillings :

- Radiopaque Barium Boron Aluminosilicate glass (0.02-2.0 µm);
- Nanoparticles of Silicon Oxide (5-20 nm);
- Aggregated particles of modified filler (0.4-1.0 µm), proportion of each filler, efficient combination of size and class of particles make a highly-filled composite material (80% mass), provide its mechanical strength and good polishing abilities.

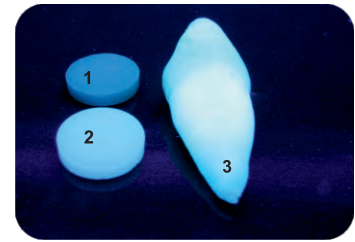
# Light Cure Filling materials



Transparency of samples, universal shade A2 of different thickness from 0,5 to 2,0 mm



ReCreate composite opalescence



Fluorescence comparison of composites and tooth tissues under exposure of ultraviolet lighting:

- 1 – Composite A
- 2 – ReCreate Composite
- 3 – Natural tooth

Convenient composite kit of shades includes **three subgroups of different transparency** what allows to match natural teeth tissues colour during modeling.

ReCreate composite samples, thickness 1,2 mm

**Transparent shades**

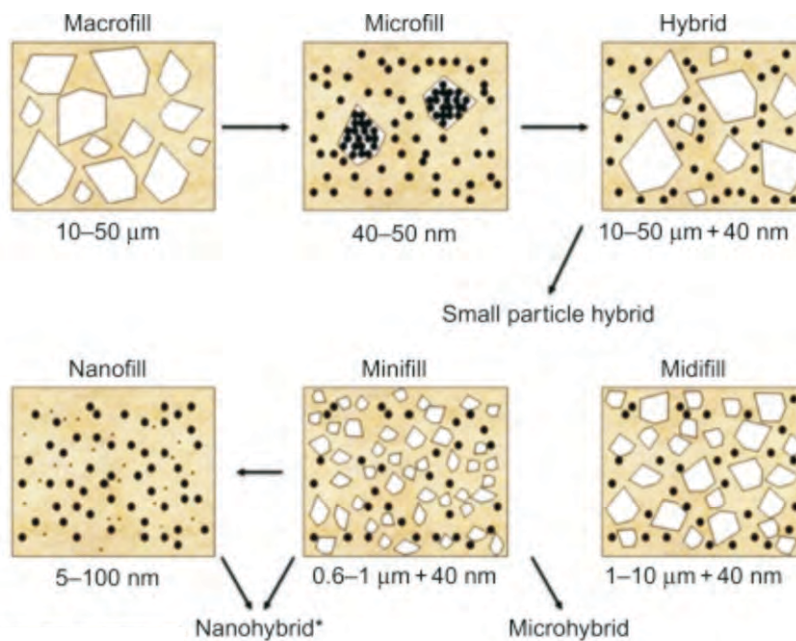
Transparent shades  
INC (translucent clear)  
for modeling of cutting edge and reaching optical "depth effect" at restoration.

**Universal shades**

Universal shades  
A1, A2, A3, A3.5, B1, B2, B3  
Possess average transparency/opacity between dentinal and enamel shades, depending on the thickness of material layer.

**Dentin-opaque shades**

Dentin-opaque shades  
OA2, OA3  
Disguising shades for intensity restoration and covering of discoloration. Allow to cover dentin pigmentation and prevent translucent transillumination. more than 0.5 mm.



Alternatives : Filtek Z350 - 3M ESPE USA

## ReCreate LC-5 Composite Kit

Universal Light Curing Nano Hybrid Composite Kit



Packaging :  
Syg. 4 x 4.5g A1, A2, A3, B2  
Smart Etch 5ml  
ReCreate Bond-5  
Accessories  
REF 005-05-445

### Indications for use

- Restoration of all cavity classes according to Black classification
- Core Build-ups
- Splinting
- Correction of composite restorations
- Fabrication of indirect restorations (inlays, onlays, veneers)

### Advantages

- Excellent polishing
- Does not stick to instrument
- Keep stable at modeling
- Excellent radiopacity
- Fluorescence

Customization of Shade Available on request

## ReCreate LC-7 Composite Kit

Universal Light Curing Nano Hybrid Composite Kit



Packaging :  
Syg. 4 x 4.5g A1, A2, A3, B2  
ProClean 7gm Composite Polishing Paste  
ReCreate Bond-7  
Accessories  
REF 005-07-445

### Indications for use

- Restoration of all cavity classes according to Black classification
- Core Build-ups
- Splinting
- Correction of composite restorations
- Fabrication of indirect restorations (inlays, onlays, veneers)

### Advantages

- Excellent polishing
- Does not stick to instrument
- Keep stable at modeling
- Excellent radiopacity
- Fluorescence

Customization of Shade Available on request

# Light Cure Filling materials

## ReCreate LC Flow

Light Curing Nano Hybrid Radiopaque Flowable Composite



For kids and adult dentistry use



### Indications for use

- Filling minimally invasive cavities of all class
- Filling small Class I cavities and extended fissure sealing
- Filling Class V (Cervical Caries) directly
- V shaped cavities including Root Erosion
- Repair Of Ceramic and Composite Resin Veneers
- Block out undercuts for Impression
- Luting translucent prosthetic and orthodontic pieces

### Advantages

- Excellent Flowability
- Excellent polishing
- Does not stick to instrument
- Keeps stable at modeling
- Excellent radiopacity
- Fluorescence

Curing Time 20-40 Second.  
Compressive Strength -282Mpa  
Available In High Viscous and Low Viscous

Packaging :  
Syg. 2 x 2.5g  
REF 005-01-250

Shade : A1, A2, A3, B2, Pink, Blue

Alternatives : Filtek Flow - 3M ESPE USA

## ReCreate Bond 5

Total Etch  
5<sup>th</sup> Generation Bonding System

Presentation :  
dropper bottle (5 ml)  
005-05-005

## ReCreate Bond 7

Self Etch  
7<sup>th</sup> Generation Bonding System

Presentation :  
dropper bottle (5 ml)  
005-07-005

### Indications for use

- Reliable bonding of Ic composite restoration to dental tissues

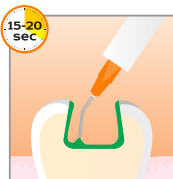
### Advantages

- Easy penetration into dentine tubules
- Elastance and tight edge fit
- Tight adhesion to tooth hard tissues (27 MPa)
- Easy adaption of composite first layer
- Compatible with all light-curing composites

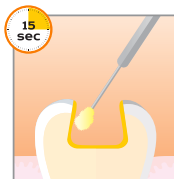


*! Do not wash after application of Bond*

Curing Time 20 Second.



Etching

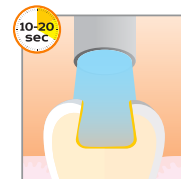


bond applying



drying

Curing Time 20 Second.



light curing

Alternatives : Solo Bond - Voco, Bondfix-Voco, Germany



## ReCal LC

Light Curing Calcium Hydroxide Cavity Liner and Pulp Capping



Packaging :  
Syringe (2.5 g)  
REF 005-03-250

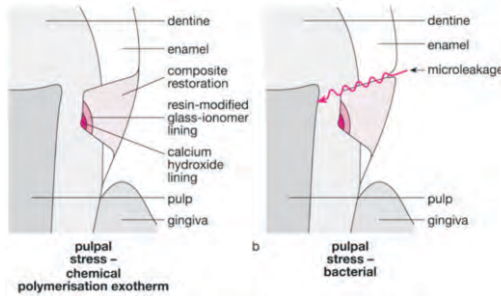
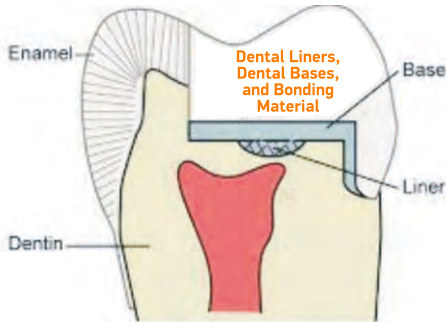
### Indications for use

- Indirect Pulp capping for Carious exposures
- As a Cavity liner under all restorative material

### Advantages

ReCal - LC is designed to perform better barrier for pulp tissues, appropriate placement of material in to deep cavities. Light curing property gives better stability of cavity liner that gives immediate placement of restoration over cavity lining area.

Thickness 1 mm layer  
Curing Time 20 Second.



Alternatives : Calcimol Lc - Voco, Germany

## ReGlass LC

Light Curing Radiopaque Glass Ionomer Cavity Liner



Packaging :  
Syringe (2.5 g)  
REF 005-04-250



### Indications for use

- An a Cavity liner under all restorative materials for better thermal insulators.
- In class V cavities for abrasion defects.
- Pit and fissure sealing and smaller surface lesions under ATR.

### Advantages

ReGlass - Lc is designed to perform better barrier for pulp tissues, appropriate placement of material in to deep cavities. Light curing property gives better stability of cavity liner that gives immediate placement of restoration over cavity lining area.

Thickness 1 mm layer  
Curing Time 20 Second.

Alternatives : Ionoseal - Voco, Germany

## ReTemp LC Flow

## ReTemp LC Flow Clear

Light-curing temporary filling composite

Packaging :  
Syringe (2 x 2.5 g)  
REF 005-02-250 B  
REF 005-02-250 C



### Indications for use

- Temporary isolation of cavities during long endodontic treatment
- Temporary isolation during microprosthetics
- Temporary sealing of implant abutment screw
- Blocking concavities before impression making
- Fixation of polymer matrix in interdental spaces during restoration.
- As a Gingival Barrier
- Preendodontic Build Up

### Advantages

- Saving time (curing time is 10-20 sec)
- Easy to use
- Tight marginal seal
- Withstands chewing load
- Easy to treat and polish
- Can be easily removed in one portion without drilling

### Flexible and reliable filling

Last generation elastomer provides best combination of viscoelasticity and strength properties of material. Light cure polymerization forms stable 3D net structure with "shape memory". Low shrinkage of material allows decreasing polymerization stress of margin filling-tooth and avoiding marginal gap appearance. Cured material is easy to remove by one whole portion with hand dental instrument not damaging prepared cavity margin (even with the presence of overhang).



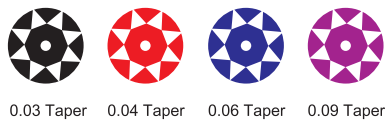
### Comparative characteristics

Material	ReTemp LC Flow	Temp it <sup>2</sup> (Spident, Korea)	Clip <sup>2</sup> (Voco, Germany)	Requirements ISO 4049
Physical and chemical properties				
Water solubility, µg/mm <sup>3</sup>	1,1	5,66	0,46 %	≤ 7,5
Water absorption, µg/mm <sup>3</sup>	10,3	35,98	—	≤ 40
Hardness (Shore A)	87	86 <sup>1</sup>	90	—

Alternatives : Clip - VOCO, Germany; Temp.it - Spident, Korea; Temp.it Flow - Spident, Korea

# Smart Files

## NiTi Heat Activation



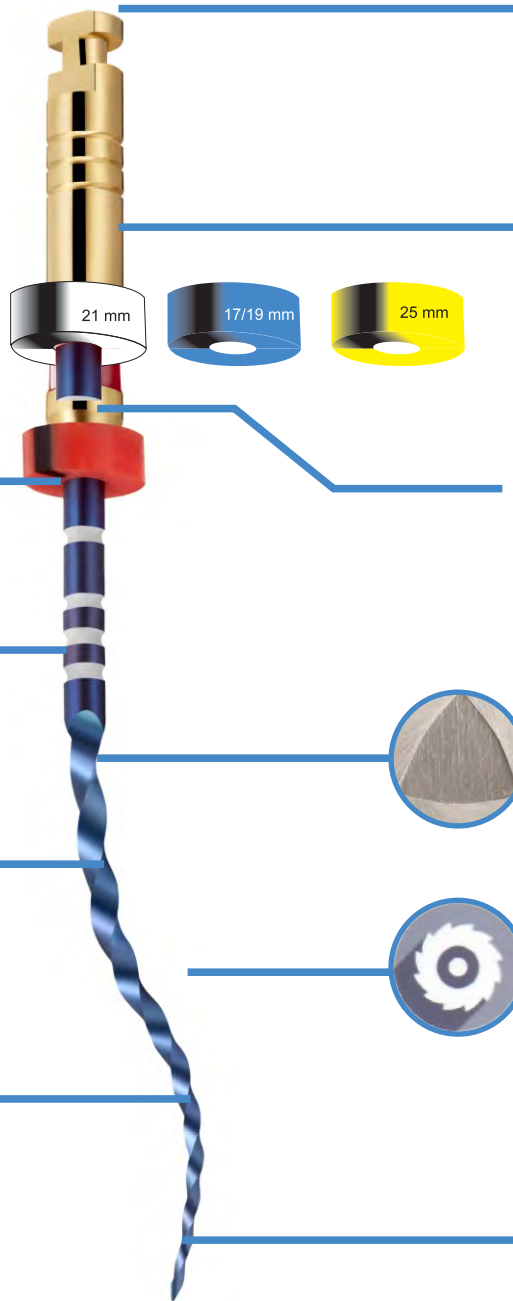
Petals or SMD  
(Safety Memory Disc)

Two Files for  
Most Cases

High Fracture  
Resistance

Excellent  
Flexibility

CTA Wire-  
Controlled  
Thermal  
Activation Wire



Taper Indicator  
2 Rings 0.04 Taper  
3 Rings 0.06 Taper

Colour Coding-  
Easy Identification  
of Tip Size

Calibrated  
Length Marking

Triangle cross

Sharp Cutting Flutes  
For Better Cutting  
Efficiency

Safety Tip-  
Non Cutting Tip

EXAMPLE OF CANAL COMPLEXITY  
SIMPLE, Straight/Slightly curved canals  
MEDIUM, Moderately curved/Narrow canals  
DIFFICULT, Extreme curvature/S-Shaped/Calcified



REMOVE  
1 Petal  
2 Petals  
3 Petals

For Speed And Torque

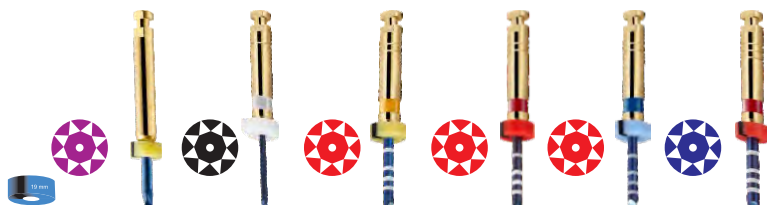
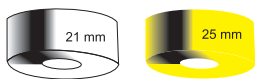


# Smart Files

## NiTi Heat Activation

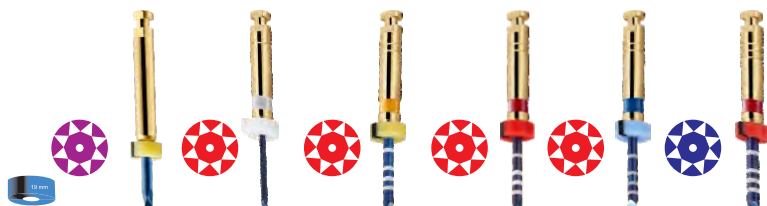
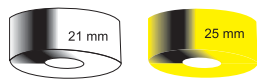
- Operation Type: Engine Use
- Made of high quality NiTi alloy, after heat activation treatment  
blue colour is derived
- Blue file are flexible, tough, and pre-curved suitable for curved canals
- More sharper and performs better for canal preparation
- 6pcs per pack, available for single or assorted sizes

### Assorted 1




	Model	0#	15#	20#	25#	30#	25#
	Taper	9%	3%	4%	4%	4%	6%
	Length	19mm	2 1 / 25 m m				
	Torque	3.0 N.cm	1.5 N.cm	1.5 N.cm	1.5 N.cm	1.5 N.cm	2.0 N.cm
	Speed	300-350rpm	150rpm	200-250rpm	200-250rpm	200-250rpm	250-300rpm

### Assorted 2



	Model	0#	17#	20#	25#	30#	25#
	Taper	9%	4%	4%	4%	4%	6%
	Length	19mm	2 1 / 25 m m				
	Torque	3.0 N.cm	2.0 N.cm	1.5 N.cm	1.5 N.cm	1.5 N.cm	2.0 N.cm
	Speed	300-350rpm	200rpm	200-250rpm	200-250rpm	200-250rpm	250-300rpm


## Assorted 3 for Pedo & Wisdom Teeth



17/19 mm  
17 mm

Model	0#	20#	17#	20#	25#	20#
Taper	6%	3%	4%	4%	4%	6%
Length	17mm	19 mm				
Torque	3.0N.cm	1.0N.cm	1.0N.cm	1.0N.cm	1.5N.cm	2.0N.cm
Speed	300-350rpm	150-200rpm	150-200rpm	150-200rpm	150-200rpm	150-200rpm

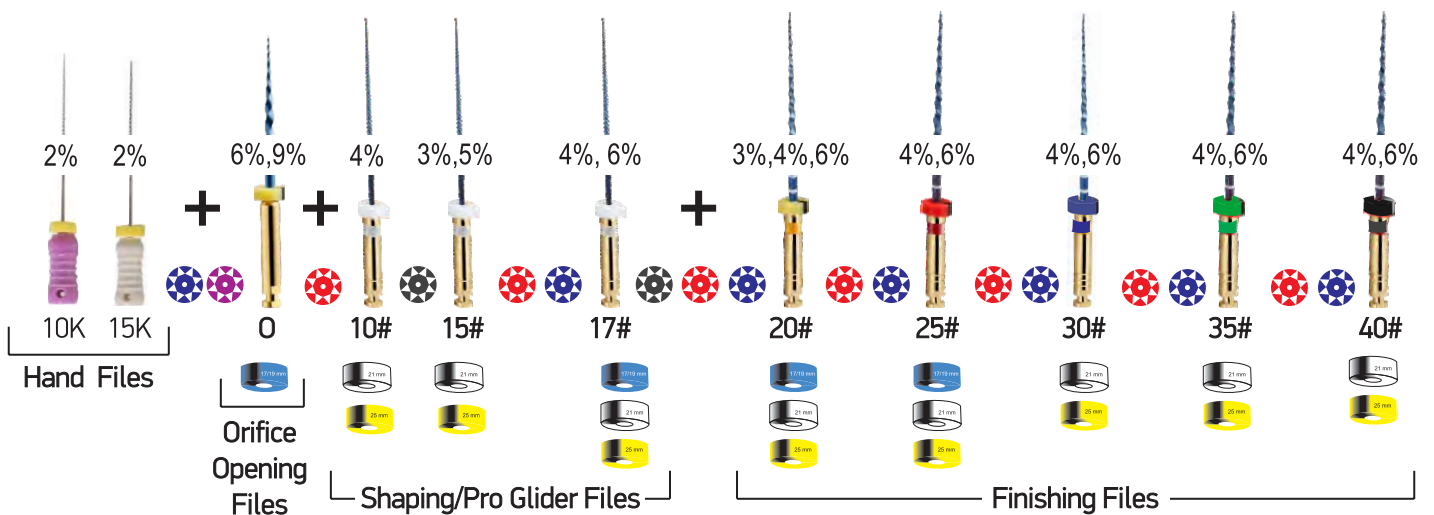
## Assorted Protaper



21 mm  
25 mm  
Rotary / Hand  
17 mm

Model	SX	S1	S2	F1	F2	F3
Taper	3.5-19%	2-11%	4-12%	7%	8%	9%
Length	19mm	2 1 / 2 5 m m				
Torque	3.0N.cm	1.5N.cm	1.5N.cm	2.0N.cm	2.0N.cm	2.0N.cm
Speed	300-350rpm	200-250rpm	150-200rpm	250-300rpm	250-300rpm	250-300rpm

## Procedure Protocol

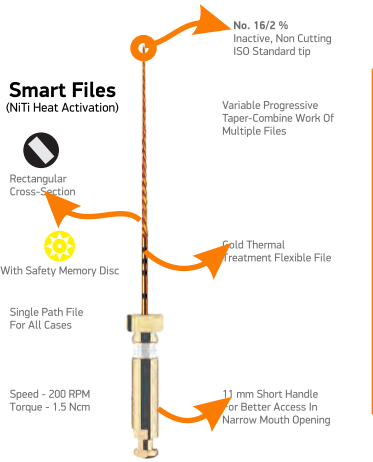


2% 2% 6%,9% 4% 3%,5% 4%, 6% 3%,4%,6% 4%,6% 4%,6% 4%,6% 4%,6%

10K 15K 0 10# 15# 17# 20# 25# 30# 35# 40#

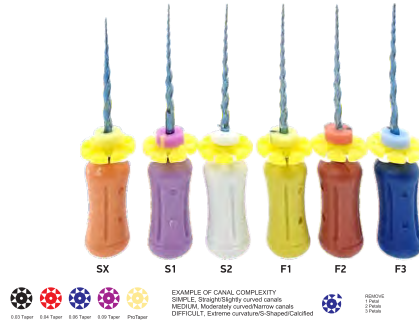
Hand Files      Orifice Opening Files      Shaping/Pro Glider Files      Finishing Files

## No. 16/2 % Variable Taper



## Hand ProTaper - 21/25 mm

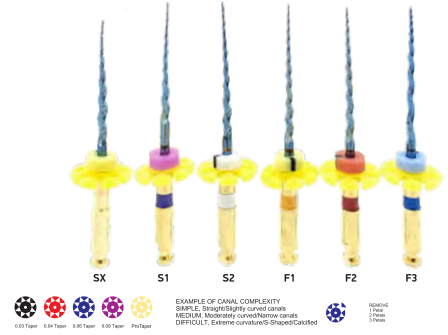
### Smart Files (NiTi Heat Activation)



Available in Individual Pack

## Rotary ProTaper - 21/25/31 mm

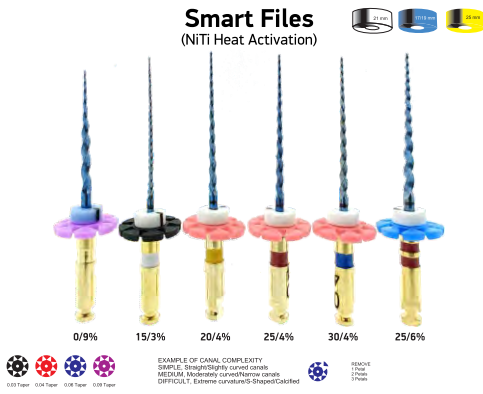
### Smart Files (NiTi Heat Activation)



Available in Individual Pack

## Rotary Assorted-01- 21/25 mm

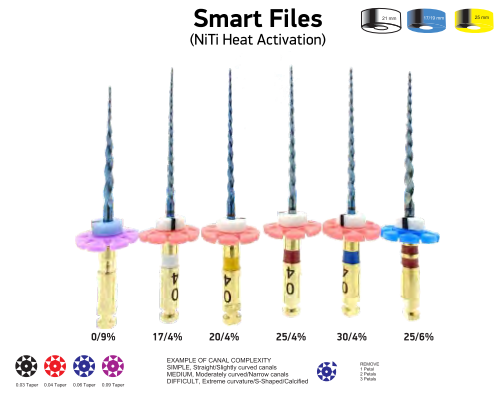
### Smart Files (NiTi Heat Activation)



Available in Individual Pack

## Rotary Assorted-02- 21/25 mm

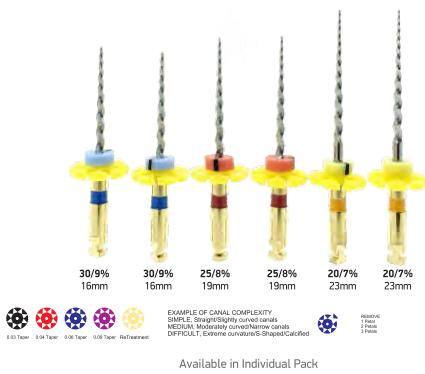
### Smart Files (NiTi Heat Activation)



Available in Individual Pack

## Retreatment File Assorted

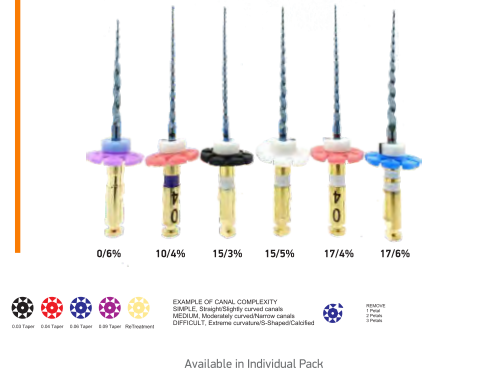
### Smart Files



Available in Individual Pack

## Assorted 7 Path File

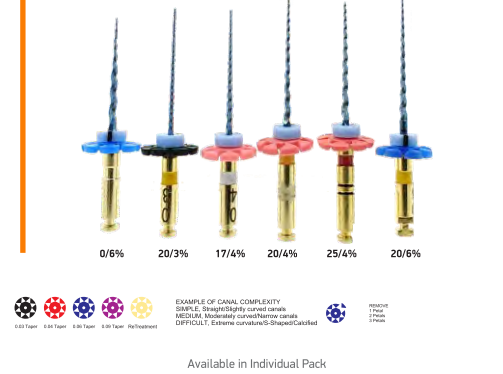
### Smart Files (NiTi Heat Activation)



Available in Individual Pack

## Assorted 03 for Pedo & WisdomTeeth

### Smart Files (NiTi Heat Activation)



Available in Individual Pack

enhance your endo !!

We produce international quality Dental Products to ease work of Dental Professional more conveniently and safely.  
We are committed to serve Dental Fraternity.



 SafeEndo

A/6/2, Kamdhenu Industrial Estate,  
Gorwa, Vadodara-390016.

F-22/F-35, BIDD, Gorwa,  
Vadodara-390016

D/207, 2nd Floor, Abhishek Complex-1,  
Asarwa, Ahmedabad-380016.

D-21, Lilamani Business Park,  
Asarwa, Ahmedabad-380016